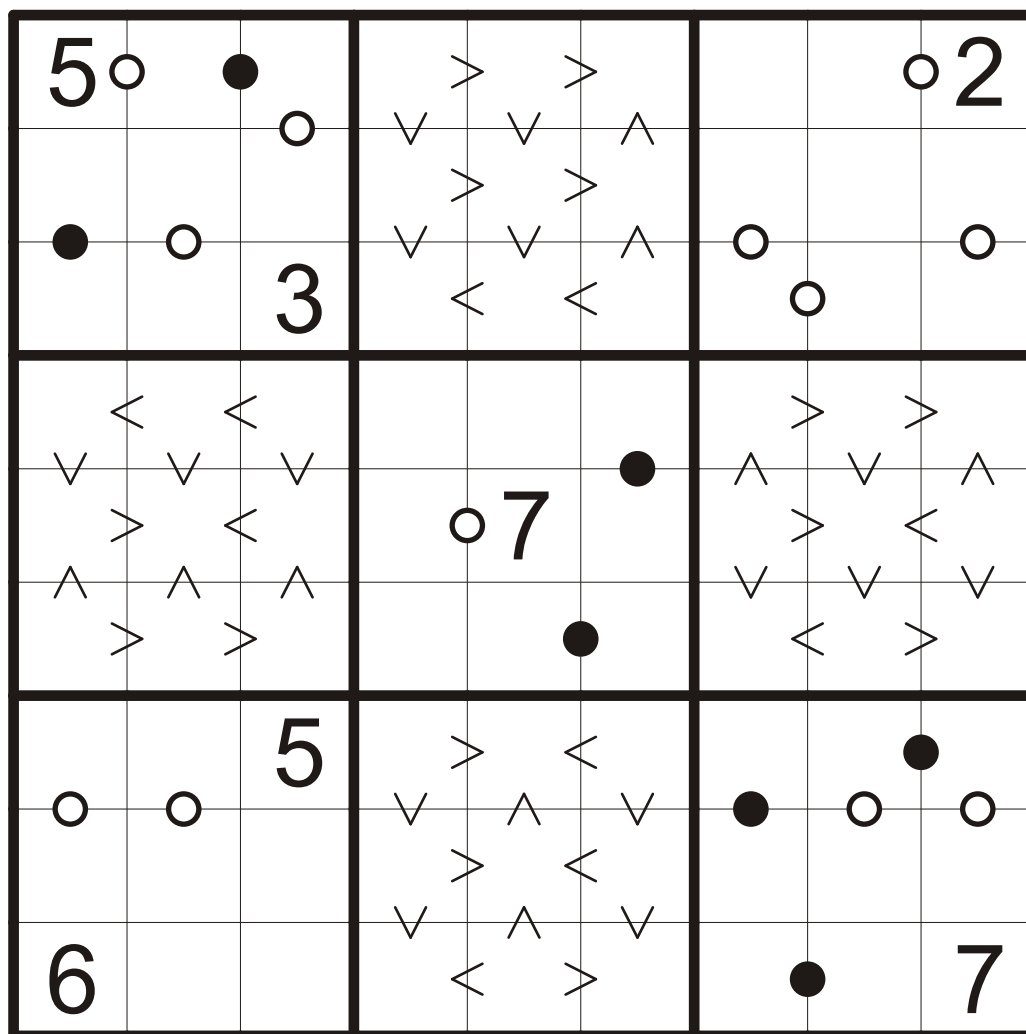


# Biathlon

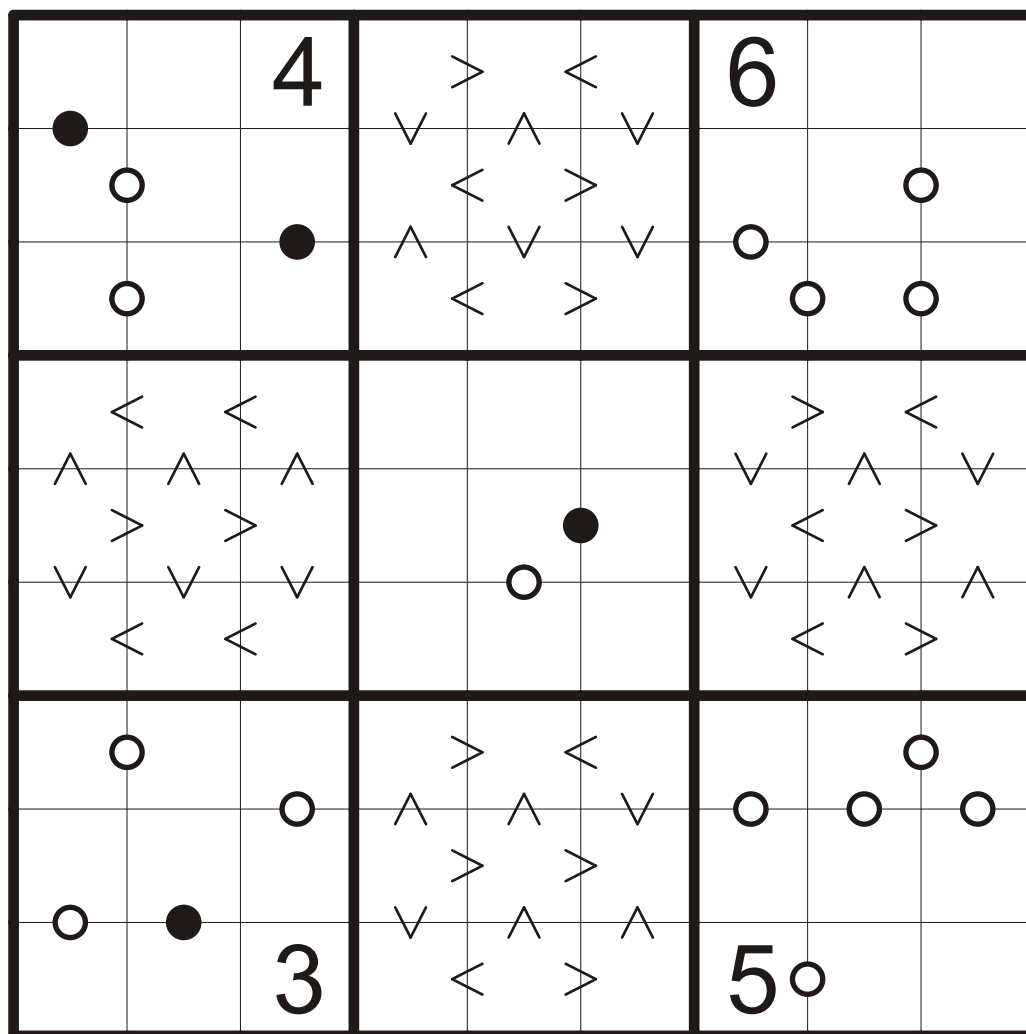
Rules: Apply standard sudoku rules and moreover there are greater/less signs. All the pairs of consecutive digits are marked with white dots and all the pairs in which one digit is the double of the other one are marked with black dots. (The dot between digits 1 and 2 has any of these two dots.) Take care of the cells on the edge of squares where there are no signs.



KP BI 1

# Biathlon

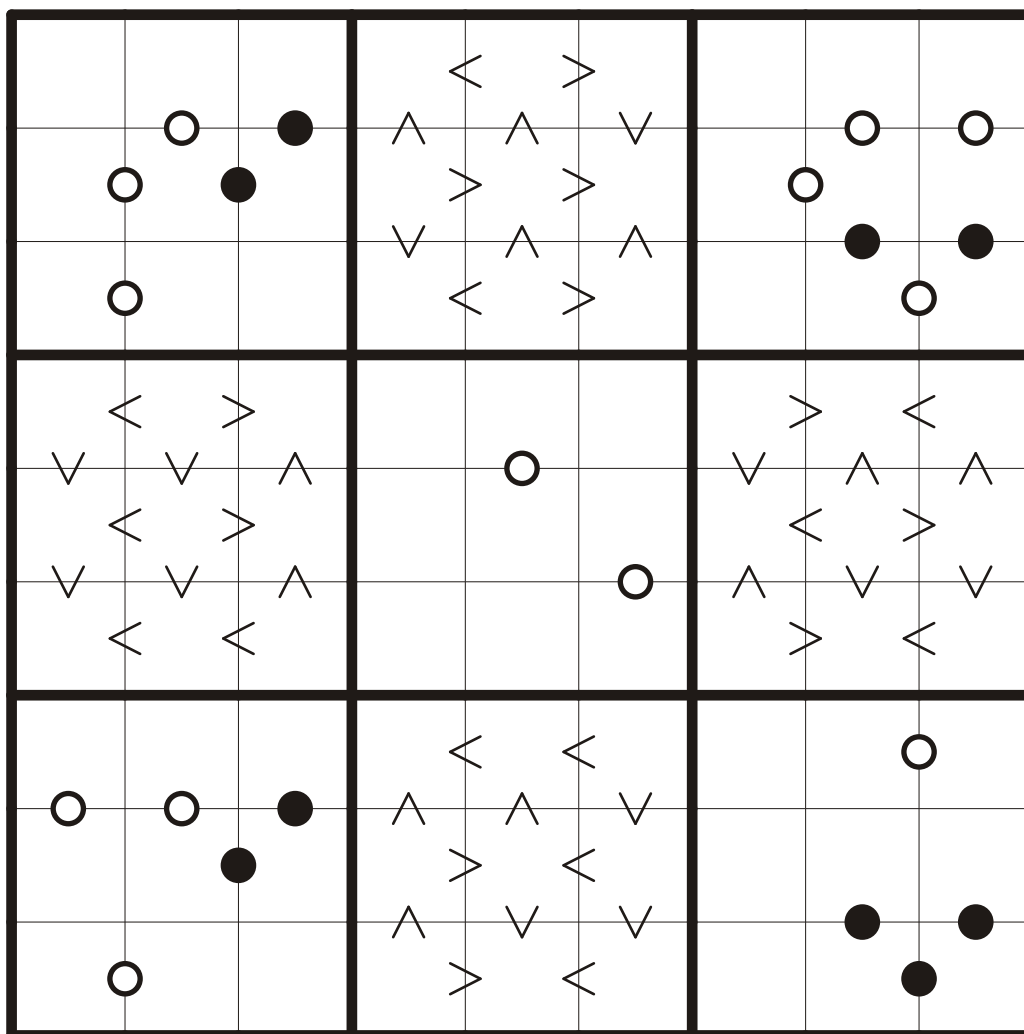
Rules: Apply standard sudoku rules and moreover there are greater/less signs. All the pairs of consecutive digits are marked with white dots and all the pairs in which one digit is the double of the other one are marked with black dots. (The dot between digits 1 and 2 has any of these two dots.) Take care of the cells on the edge of squares where there are no signs.



KP BI 2

# Biathlon

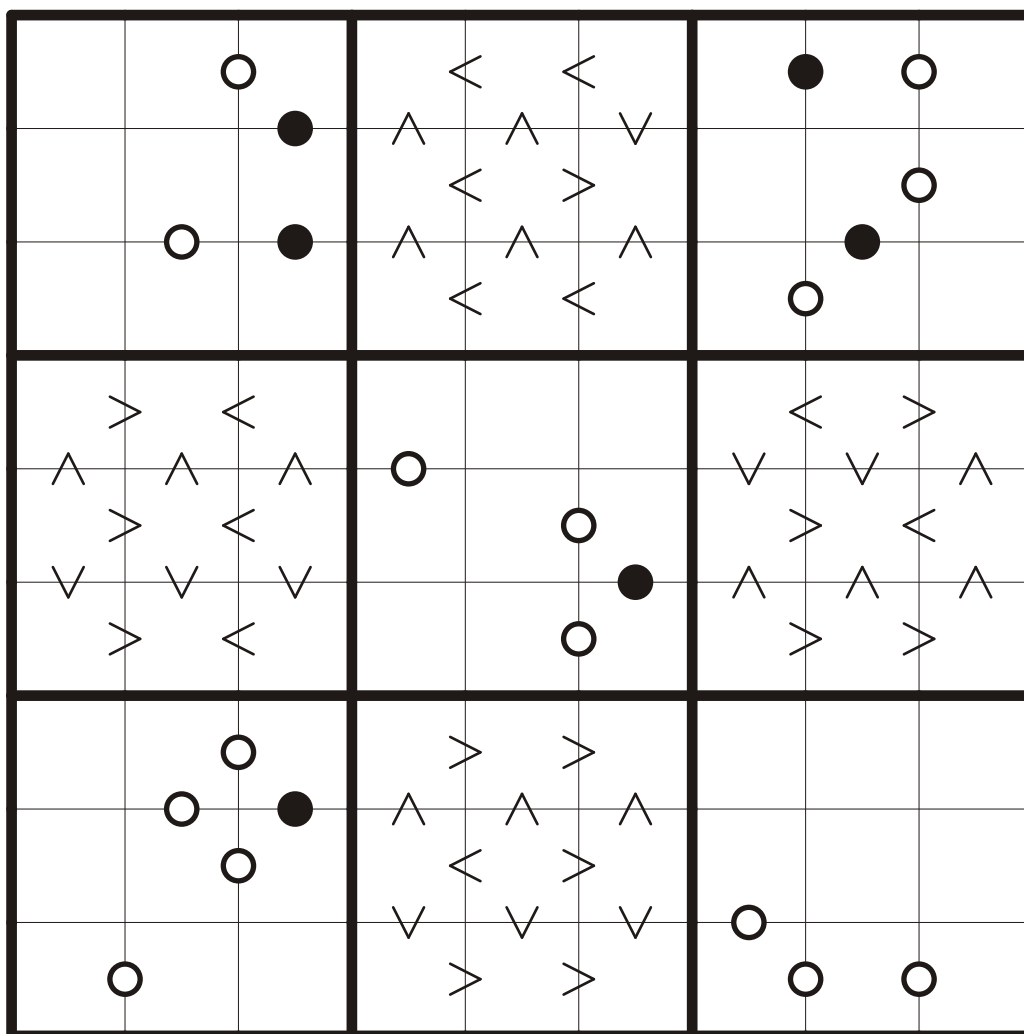
Rules: Apply standard sudoku rules and moreover there are greater/less signs. All the pairs of consecutive digits are marked with white dots and all the pairs in which one digit is the double of the other one are marked with black dots. (The dot between digits 1 and 2 has any of these two dots.) Take care of the cells on the edge of squares where there are no signs.



KP BI 3

# Biathlon

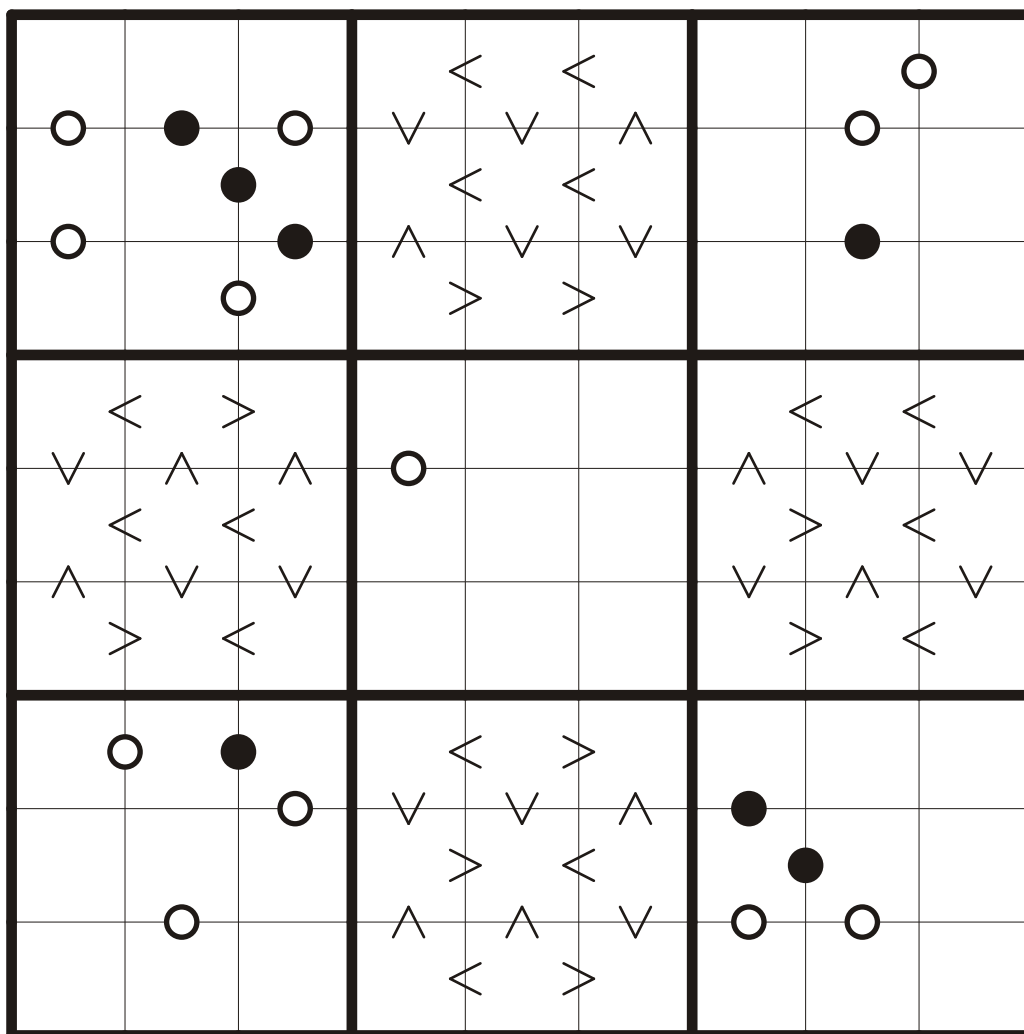
Rules: Apply standard sudoku rules and moreover there are greater/less signs. All the pairs of consecutive digits are marked with white dots and all the pairs in which one digit is the double of the other one are marked with black dots. (The dot between digits 1 and 2 has any of these two dots.) Take care of the cells on the edge of squares where there are no signs.



KP BI 4

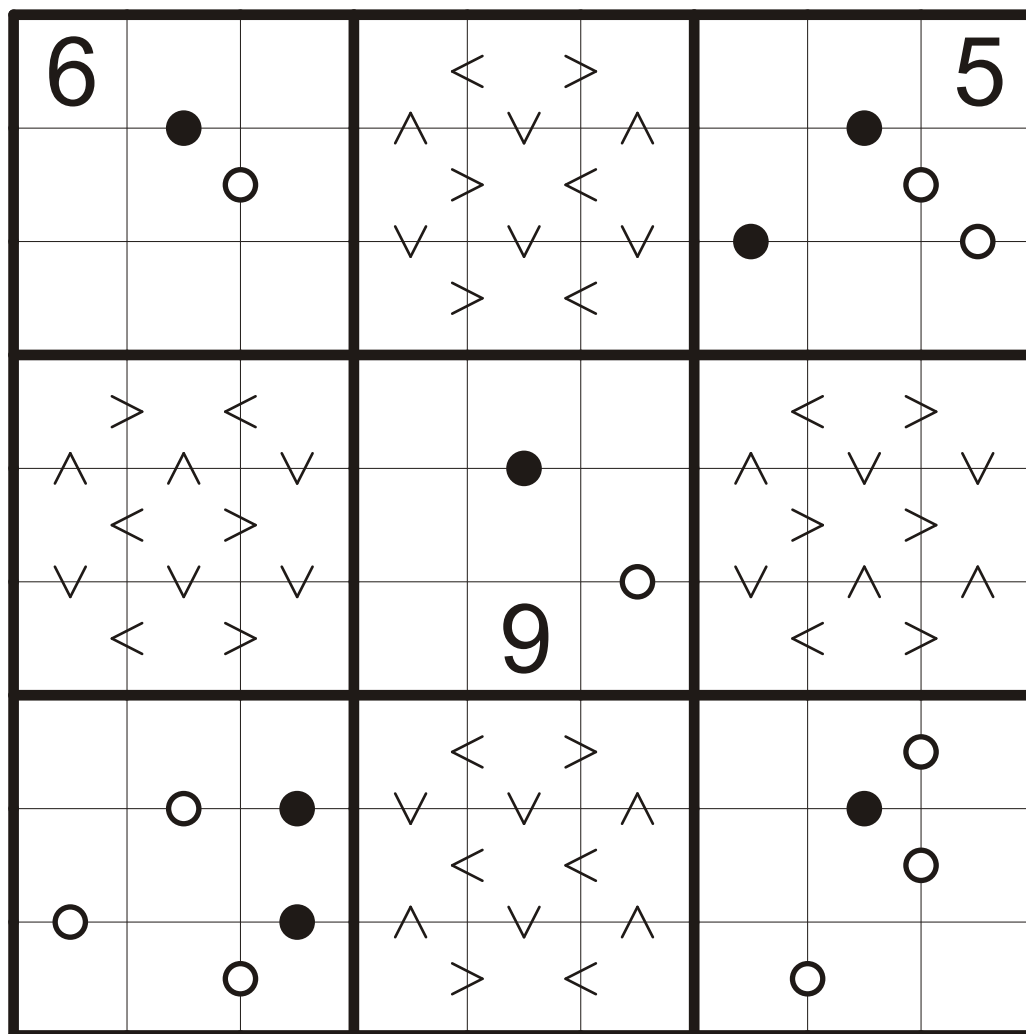
# Biathlon

Rules: Apply standard sudoku rules and moreover there are greater/less signs. All the pairs of consecutive digits are marked with white dots and all the pairs in which one digit is the double of the other one are marked with black dots. (The dot between digits 1 and 2 has any of these two dots.) Take care of the cells on the edge of squares where there are no signs.



KP BI 5

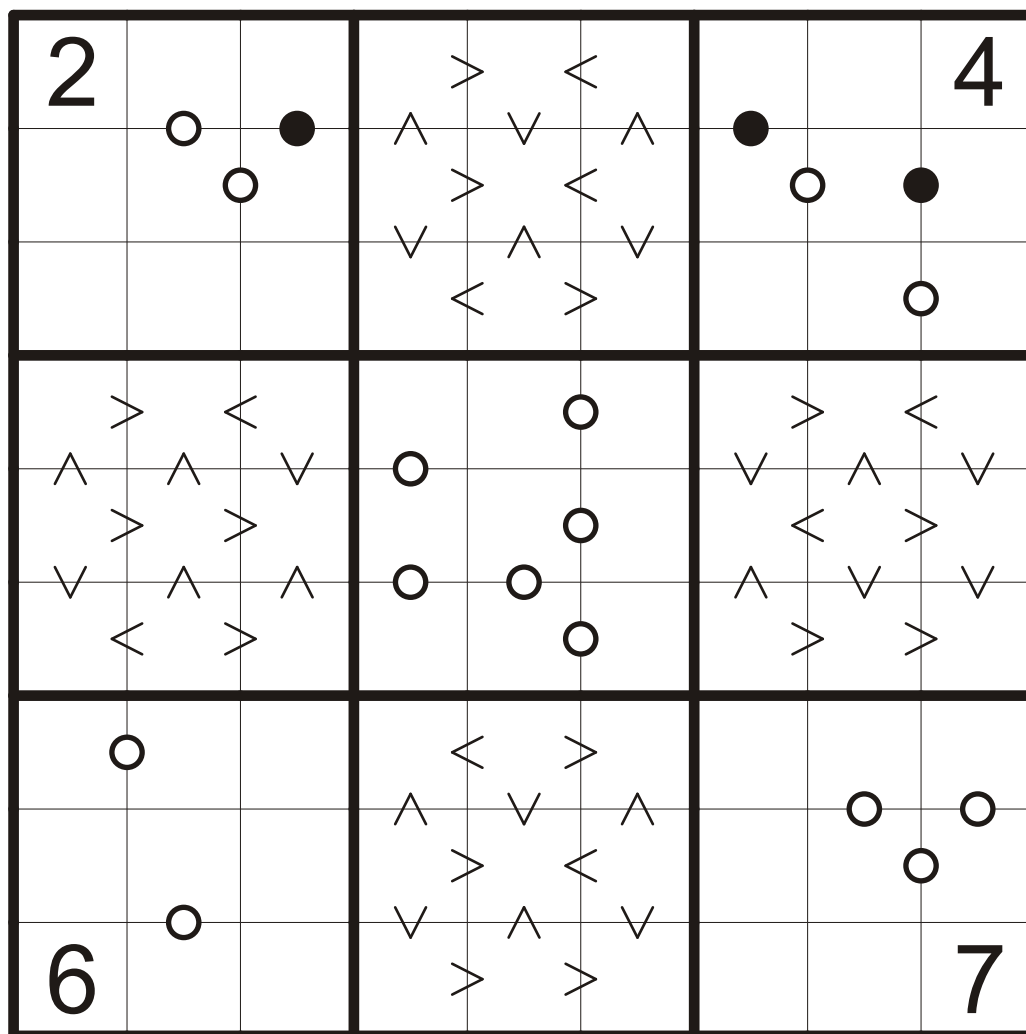
Rules: Apply standard sudoku rules and moreover there are greater/less signs. All the pairs of consecutive digits are marked with white dots and all the pairs in which one digit is the double of the other one are marked with black dots. (The dot between digits 1 and 2 has any of these two dots.) Take care of the cells on the edge of squares where there are no signs.



KP BI 6

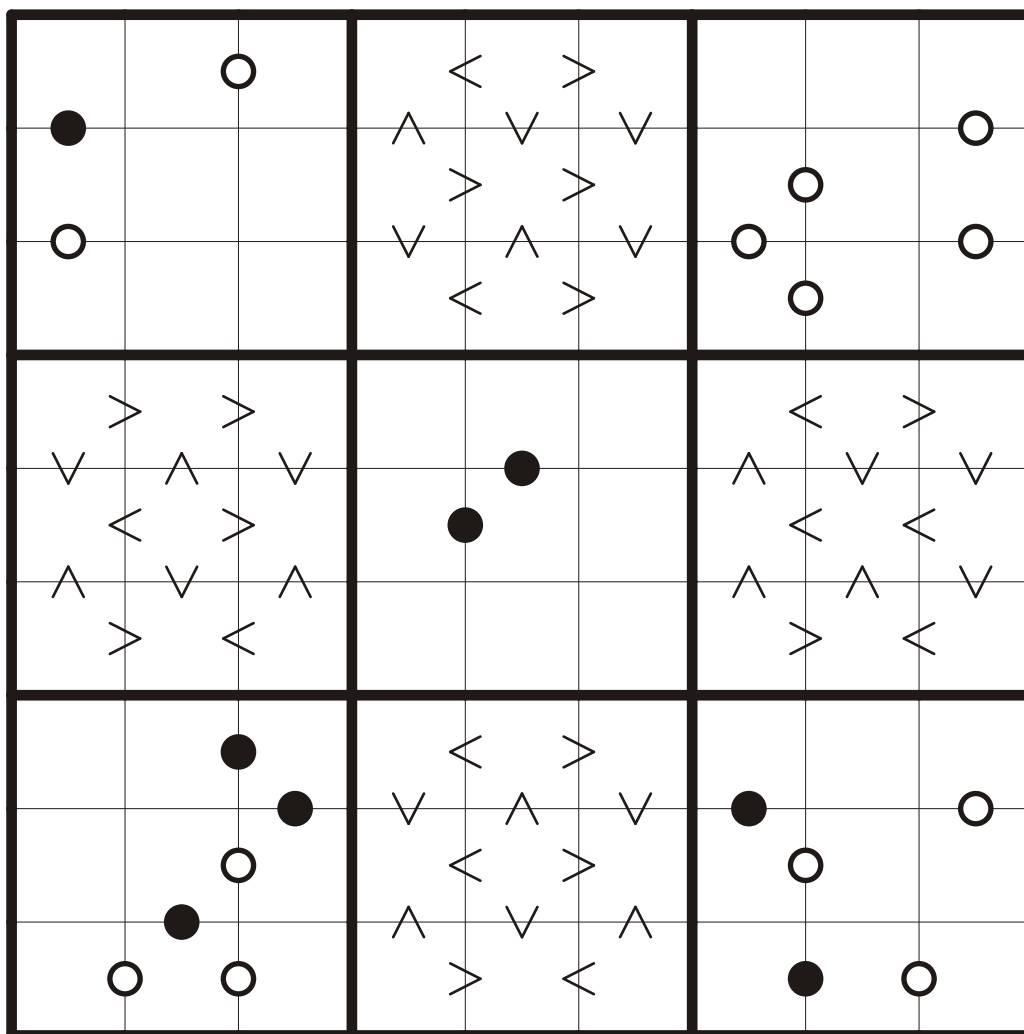
# Biathlon

Rules: Apply standard sudoku rules and moreover there are greater/less signs. All the pairs of consecutive digits are marked with white dots and all the pairs in which one digit is the double of the other one are marked with black dots. (The dot between digits 1 and 2 has any of these two dots.) Take care of the cells on the edge of squares where there are no signs.



KP BI 7

Rules: Apply standard sudoku rules and moreover there are greater/less signs. All the pairs of consecutive digits are marked with white dots and all the pairs in which one digit is the double of the other one are marked with black dots. (The dot between digits 1 and 2 has any of these two dots.) Take care of the cells on the edge of squares where there are no signs.



© Honza Krtek Novotný



5	4	8	9	6	1	7	3	2
2	6	9	7	5	3	4	1	8
1	7	3	2	4	8	5	6	9
4	5	6	1	9	2	8	7	3
3	1	2	8	7	4	9	5	6
9	8	7	5	3	6	2	4	1
7	2	5	6	1	9	3	8	4
8	3	1	4	2	7	6	9	5
6	9	4	3	8	5	1	2	7

KP BI 1

3	7	4	5	2	8	6	9	1
6	5	1	3	9	4	2	7	8
8	9	2	6	7	1	3	4	5
1	4	6	8	5	2	9	3	7
9	8	7	1	3	6	4	5	2
2	3	5	7	4	9	1	8	6
7	6	9	4	1	5	8	2	3
5	2	8	9	6	3	7	1	4
4	1	3	2	8	7	5	6	9

KP BI 2

5	1	8	3	6	4	2	7	9
3	2	4	9	7	1	5	6	8
7	6	9	5	8	2	1	3	4
4	9	3	7	2	8	6	1	5
2	8	6	1	3	5	4	9	7
1	5	7	4	9	6	8	2	3
8	3	1	2	4	9	7	5	6
9	4	2	6	5	7	3	8	1
6	7	5	8	1	3	9	4	2

KP BI 3

5	8	9	1	4	7	6	3	2
3	7	4	2	6	5	1	8	9
1	6	2	3	8	9	5	4	7
6	2	5	4	1	8	7	9	3
8	3	9	5	7	6	2	1	4
4	1	7	9	2	3	8	6	5
7	4	3	6	5	1	9	2	8
2	5	6	8	9	4	3	7	1
9	8	1	7	3	2	4	5	6

KP BI 4

7	1	3	2	6	8	9	4	5
6	2	4	1	5	9	7	3	8
5	9	8	7	4	3	1	6	2
3	4	1	6	8	2	5	7	9
2	6	9	5	3	7	8	1	4
8	5	7	9	1	4	6	2	3
4	3	6	8	9	1	2	5	7
9	7	5	3	2	6	4	8	1
1	8	2	4	7	5	3	9	6

KP BI 5

6	2	8	4	7	1	9	3	5
1	4	3	8	5	9	2	6	7
5	7	9	6	2	3	4	1	8
3	1	7	2	6	8	5	9	4
4	9	6	7	3	5	8	2	1
2	8	5	1	9	4	3	7	6
9	6	1	5	8	2	7	4	3
7	5	2	3	4	6	1	8	9
8	3	4	9	1	7	6	5	2

KP BI 6

2	6	8	7	3	5	1	9	4
7	5	4	9	1	8	2	3	6
3	1	9	4	6	2	5	7	8
8	2	3	1	5	4	7	6	9
9	4	1	2	7	6	3	8	5
5	7	6	3	8	9	4	2	1
4	3	7	6	9	1	8	5	2
1	9	5	8	2	7	6	4	3
6	8	2	5	4	3	9	1	7

KP BI 7

2	7	8	3	9	6	5	1	4
4	1	6	7	5	2	8	9	3
3	5	9	4	8	1	7	6	2
6	4	3	5	2	9	1	8	7
5	9	1	8	4	7	2	3	6
8	2	7	6	1	3	9	4	5
1	8	4	2	6	5	3	7	9
9	3	2	1	7	4	6	5	8
7	6	5	9	3	8	4	2	1

KP BI 8