

INDIAN SUDOKU CHAMPIONSHIP 2010

2nd ONLINE ROUND 9th January 2010

PART 1: Classics

Part 1 : Classics (600 points)	
No. of Sudokus solved	Points
1	70
2	120
3	165
4	210
5	250
6	290
7	330
8	370
9	405
10	440
11	475
12	510
13	540
14	570
15	600



4								5
	7						6	
		5	1		7	9		
		2	4		5	3		
		1	2		8	4		
		8	3		2	7		
	2						5	
7								4

Classic Sudoku - 1

Fill in the grid so that every row, every column and every 3x3 box contains the digits 1 through 9.

	6		7		2		5	
		4	1		3	2		
→	5	1				3	7	
→				6				
	8	6				5	2	
		8	5		7	1		
	7		6		8		4	

Classic Sudoku - 2

Fill in the grid so that every row, every column and every 3x3 box contains the digits 1 through 9.

Classic Sudoku - 3

Fill in the grid so that every row, every column and every 3x3 box contains the digits 1 through 9.

↓

				1				
		2	7		4	8		
	9						5	
	1			5			9	
3			8		9			6
	8			6			3	
	6						7	
		4	6		8	2		
				9				

→

Classic Sudoku - 4

Fill in the grid so that every row, every column and every 3x3 box contains the digits 1 through 9.

		7						
	6			1	2			
8				5	6	1		
					1	5	7	
	7	4				3		
	2	3	9					
		1	3	4				9
			6				1	
						8		

→

→

Classic Sudoku - 5

Fill in the grid so that every row, every column and every 3x3 box contains the digits 1 through 9.

			7		4			
		2	5		8	3		
	7	8				6	1	
7	3						2	1
6	2						9	4
	9	3				1	7	
		1	3		9	2		
			2		1			

Classic Sudoku - 6

Fill in the grid so that every row, every column and every 3x3 box contains the digits 1 through 9.

				5				
			1	2	4			
		1	6		3	8		
	9	7				1	4	
3	2						9	6
	4	6				2	3	
		2	5		8	7		
			4	7	2			
				1				



		9				5		
	5		7		8		9	
4				1				8
	7						5	
		1				3		
	6						1	
2				3				1
	9		2		7		8	
		5				2		

Classic Sudoku - 7

Fill in the grid so that every row, every column and every 3x3 box contains the digits 1 through 9.



			4		2			
		7				1		
	2	1				6	3	
4			2		6			1
				3				
5			7		9			2
	5	3				9	8	
		9				4		
			8		5			

Classic Sudoku – 8

Fill in the grid so that every row, every column and every 3x3 box contains the digits 1 through 9.

Classic Sudoku – 9

Fill in the grid so that every row, every column and every 3x3 box contains the digits 1 through 9.

	7	6	2	5				
→								9
		4			6	2		7
		2						1
	7							5
	1					9		
	8		3	4		1		
→	9							
				8	5	4	9	



Classic Sudoku – 10

Fill in the grid so that every row, every column and every 3x3 box contains the digits 1 through 9.

		9				1		
	5				7		6	
2				3				8
	7		9		4			
		1				4		
			3		5		8	
7				2				5
	6		5				4	
		8				3		

Classic Sudoku - 11

Fill in the grid so that every row, every column and every 3x3 box contains the digits 1 through 9.

			3		1			
		7				4		
	8		2		6		3	
3		2				8		5
5		8				7		9
	6		1		8		9	
		9				1		
			6		7			

Classic Sudoku - 12

Fill in the grid so that every row, every column and every 3x3 box contains the digits 1 through 9.

		1				4		
	2			5			8	
5			4		9			6
		9				5		
	3						6	
		4				1		
9			2		4			3
	7			3			1	
		5				8		

Classic Sudoku - 13

Fill in the grid so that every row, every column and every 3x3 box contains the digits 1 through 9.

4					2			6
				9	5	2		
	6				3			
2	5	9						
	8						5	
						1	4	2
			9				8	
		3	2	1				
8			7					1

Classic Sudoku - 14

Fill in the grid so that every row, every column and every 3x3 box contains the digits 1 through 9.

		5		2				1
	9		6		8		5	
6				5		9		
		6		7				8
	8		5		6		3	
→	2			1		7		
		2		3				9
	1		9		7		2	
→	7			6		3		

Classic Sudoku - 15

Fill in the grid so that every row, every column and every 3x3 box contains the digits 1 through 9.



				9				
		2	1		8	4		
	4	6				9	2	
	3						8	
8				4				5
	5						1	
	9	5				8	6	
		7	8		2	1		
				3				

INDIAN SUDOKU CHAMPIONSHIP 2010

2nd ONLINE ROUND 9th January 2010

PART 2: Standard Variations

Part 2 : Standard Variations (700 points)	
Odd/Even	65
Diagonal	110
Frame	110
Sudoku XV	120
Irregular	130
Consecutive	165

Odd/Even Sudoku

65 points

Fill in the grid so that every row, every column and every 3x3 box contains the digits 1 through 9. Shaded cells contain the even digits while the others contain the odd digits.

↓

			3	8				
	9		1					
		4						
	5	6						
	9							3
							2	5
						1		
					8		4	
				1	9			

↓

Diagonal Sudoku

110 points

Fill in the grid so that every row, every column, every diagonal and every 3x3 box contains the digits 1 through 9.

↓

○			7	8	4			○
	○	5		1		6	○	
	3	○				○	8	
4			○		○			8
1	2			○			5	4
5			○		○			9
	4	○				○	9	
	○	9		6		8	○	
○			2	9	3			○

↓

Frame Sudoku

110 points

Fill in the grid so that every row, every column and every 3x3 box contains the digits 1 through 9. The numbers outside the grid represent the sum of first 3 digits inside the grid in the corresponding direction.

↓

	14	16	15	12	16	17	15	15	15	
23						2				10
9										24
13										11
→ 19										13
17	8								9	13
9										19
9										16
15										17
21				9						12
	14	10	21	22	13	10	21	17	7	

Sudoku XV

120 points

Fill in the grid so that every row, every column and every 3x3 box contains the digits 1 through 9. All the adjacent cell pairs (sharing an edge) with two digits summing to 5 are marked by V, while those summing to 10 are marked by X. The cells edges which do not contain an X or a V cannot have digits summing to 5 or 10.

↓

	4					V			1
			X				X		
→			X						X
			X	V		X			X
		X			4			V	
			X		X			X	
			X				X		
	X	X					V		X
	7			V			X		5

Irregular Sudoku

130 points

Fill in the grid so that every row, every column and every outlined region of nine cells contains the digits 1 through 9.

↓

	7	1				3	6	
7			4		5			1
	2			3			4	
		7				2		
	8						7	
5								9
	9						1	
		2				8		
				1				

→

Consecutive Sudoku

165 points

Fill in the grid so that every row, every column and every 3x3 box contains the digits 1 through 9. Neighboring cells which contain consecutive digits are separated by white bars. Cells which are not separated by white bars cannot contain consecutive digits.

↓

	8							
								8
6								
							7	

→

INDIAN SUDOKU CHAMPIONSHIP 2010

2nd ONLINE ROUND 9th January 2010

PART 3: Mixed Bag

Part 3 : Mixed Bag (700 points)	
Outside	75
Quadruple	75
Magic Square Sudoku	75
No Knight Step	115
Group Sum	180
Toroidal	180

Outside Sudoku

75 points

Fill in the grid so that every row, every column and the 3x3 boxes contain the digits 1 through 9. Outside digits must be inserted in the first 3 cells of the corresponding row or column.

↓

		1	5	2	2	1	7	2	3	4		
		6	9	7	4	5	9	7	6	8		

4	6										5	9
5	8										2	4
1	2										6	8
1	8										2	9
→2	4										1	3
3	9										4	6
4	7										1	5
2	5										3	9
6	9										2	7

		2	1	4	5	3	2	1	7	2		
		7	6	5	7	4	6	4	9	6		

Quadraple Sudoku

75 points

Fill in the grid so that every row, every column and the 3x3 boxes contain the digits 1 through 9. Some intersections list the digits from the four adjacent cells.

↓

→												
			2589								1345	

Magic Square Sudoku

75 points

Fill in the grid so that every row, every column and every 3x3 box contains the digits 1 through 9. The cells marked in grey form a perfect magic square. In a perfect magic square the sum of digits every row, every column and every diagonal is same.

6			9		3			5
→		1		6		4		2
	4							6
		5		7		8		4
→								
	8			4		5		
								3



No Knight Step Sudoku

115 points

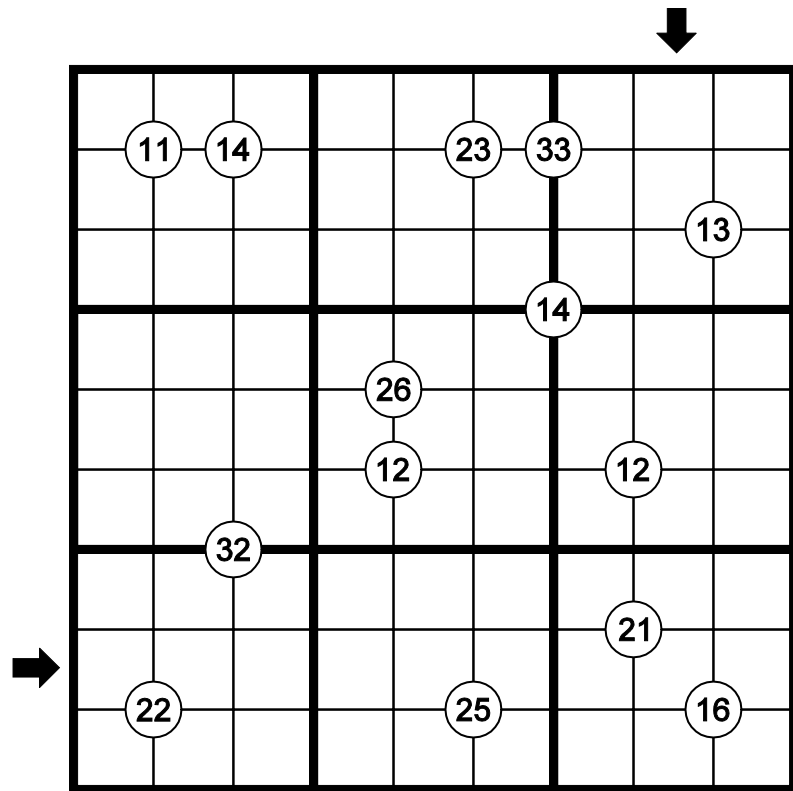
Fill in the grid with digits from 1 through 8 so that every row, every column and every outlined region contains distinct digits. No cell that is a knight-step away can contain the same digit.

				4				
			5		7			
		2				7		
	3		2		6		7	
→	7							1
	2		3		4		6	
		9				4		
			6		1			
				3				

Group Sum Sudoku

180 points

Fill in the grid so that every row, every column and every 3x3 box contains the digits 1 through 9. The numbers in each circle indicates the sum of the digits in the cells covered by the corresponding circle.



Toroidal

180 points

Fill in the grid with digits from 1 through 8 so that every row, every column and every outlined region contains distinct digits. Some of the outlined regions will wrap between the top and bottom edges, and/or the left and right edges of the grid.

