

# INDIAN SUDOKU CHAMPIONSHIP 2010

## 1<sup>st</sup> ONLINE ROUND 3<sup>rd</sup> January 2010

### PART 1: Classics

Part 1 : Classics (600 points)	
No. of Sudokus solved	Points
1	70
2	120
3	165
4	210
5	250
6	290
7	330
8	370
9	405
10	440
11	475
12	510
13	540
14	570
15	600

**Classic Sudoku - 1**

Fill in the grid so that every row, every column and every 3x3 box contains the digits 1 through 9.

↓

		2	1		5	7		
5		3			7	4		9
9		6						8
7						5		2
4		1	8			2		3
		8	6		3	1		

→

**Classic Sudoku - 2**

Fill in the grid so that every row, every column and every 3x3 box contains the digits 1 through 9.

9	3						7	8
1				6				3
			7		5			
		4				3		
	6						5	
		3				1		
			2		4			
8				1				5
6	4						9	1

→

→



	8			5			7	
6			8		3			4
	5			8			6	
4			6		9			3
	3			4			8	
9			4		6			5
	7			9			2	

### Classic Sudoku - 3

Fill in the grid so that every row, every column and every 3x3 box contains the digits 1 through 9.



6								1
	1			2			8	
		8	1		4	7		
4								7
	9			7			1	
		7	6		5	3		
9								5
	2			4			3	
		3	7		2	9		



### Classic Sudoku - 4

Fill in the grid so that every row, every column and every 3x3 box contains the digits 1 through 9.



		3		9		5		
	8		6		4		1	
5								7
	5						9	
4								2
	1						4	
7								4
	6		3		1		8	
		8		2		9		

### Classic Sudoku - 5

Fill in the grid so that every row, every column and every 3x3 box contains the digits 1 through 9.



	2		6		9		3	
9		8		2		1		6
	6						2	
3								8
	5						4	
7								1
	7						5	
4		2		9		7		3
	3		4		7		1	



### Classic Sudoku - 6

Fill in the grid so that every row, every column and every 3x3 box contains the digits 1 through 9.



		2			6			
				1	5	8		
	3				4			7
3	8	9						
	5						2	
						7	3	1
5			8				7	
		6	7	3				
			6			1		



### Classic Sudoku - 7

Fill in the grid so that every row, every column and every 3x3 box contains the digits 1 through 9.

**Classic Sudoku – 8**

Fill in the grid so that every row, every column and every 3x3 box contains the digits 1 through 9.

		2			6	1		
			3		5	7		
8	7							2
1	3						5	
	9						8	1
9							2	5
		6	8		9			
		7	5			4		



**Classic Sudoku – 9**

Fill in the grid so that every row, every column and every 3x3 box contains the digits 1 through 9.

	8	2					4	
4			9					5
			3					6
			2		1	8	9	
	1	5	7		8			
9					5			
3					6			9
	5					7	3	

**Classic Sudoku – 10**

Fill in the grid so that every row, every column and every 3x3 box contains the digits 1 through 9.

					6			
				5		7		
			8				3	
		6			1			8
	8			3			2	
1			2			6		
	6			4	3			2
		7					5	
			1	8	7	3		

**Classic Sudoku - 11**

Fill in the grid so that every row, every column and every 3x3 box contains the digits 1 through 9.

	2	5	1		4	6	3	
1								2
8				6				5
5								1
		9				8		
6								7
3				4				9
2								6
	8	6	3		7	1	2	

**Classic Sudoku - 12**

Fill in the grid so that every row, every column and every 3x3 box contains the digits 1 through 9.

5				3				2
	3			6			7	
		8				6		
			1		3			
3	6			8			1	5
			6		7			
		4				8		
	2			1			4	
1				2				3



**Classic Sudoku - 13**

Fill in the grid so that every row, every column and every 3x3 box contains the digits 1 through 9.

	1	4				6	5	
7			3		4			1
3				9				2
	9						2	
		6				5		
	4						8	
4				5				8
2			6		1			5
	5	9				7	1	



**Classic Sudoku - 14**

Fill in the grid so that every row, every column and every 3x3 box contains the digits 1 through 9.

↓

	7			2			3	
5	4						2	9
		9				4		
			7		8			
1				5				8
			1		4			
		1				3		
7	5						8	6
	2			9			7	

→

**Classic Sudoku - 15**

Fill in the grid so that every row, every column and every 3x3 box contains the digits 1 through 9.

↓

3								4
			2		4			
		2	3		5	7		
	3	5	8		7	2	6	
	4	9	5		6	8	1	
		4	9		8	1		
			7		2			
5								6

→

# INDIAN SUDOKU CHAMPIONSHIP 2010

## 1<sup>st</sup> ONLINE ROUND 3<sup>rd</sup> January 2010

### PART 2: Standard Variations

Part 2 : Standard Variations (700 points)	
Odd/Even	65
Diagonal	110
Frame	110
Sudoku XV	120
Irregular	130
Consecutive	165

### Odd/Even Sudoku

65 points

Fill in the grid so that every row, every column and every 3x3 box contains the digits 1 through 9. Shaded cells contain the even digits while the others contain the odd digits.

↓

						8	9	
					2			6
					1			7
	9	7				2	1	
1			2					
	4			5				
	5	8						

↓

### Diagonal Sudoku

110 points

Fill in the grid so that every row, every column, every diagonal and every 3x3 box contains the digits 1 through 9.

↓

	3		9		6		1	
7		5				6		2
	1						9	
5								6
9								4
	5						6	
8		4				2		1
	2		6		4		7	

↓

### Frame Sudoku

110 points

Fill in the grid so that every row, every column and every 3x3 box contains the digits 1 through 9. The numbers outside the grid represent the sum of first 3 digits inside the grid in the corresponding direction.

↓

	14	18	13	19	16	10	20	13	12	
7										22
21			5							12
17								4		11
15										14
11										21
19										10
18		5								8
20							6			15
7										22
	16	12	17	20	12	13	18	11	16	

↓

### Sudoku XV

120 points

Fill in the grid so that every row, every column and every 3x3 box contains the digits 1 through 9. All the adjacent cell pairs (sharing an edge) with two digits summing to 5 are marked by V, while those summing to 10 are marked by X. The cells edges which do not contain an X or a V cannot have digits summing to 5 or 10.

↓

	1						x	7	
					x			v	
	x								
→	v	x	x	x	x	x	x	x	
	x						v		
		x							
	x	x	x	x	x	x	x	v	
		x			x				
					v				
	6	x	x	x	v			x	5

↓

**Irregular Sudoku**

**130 points**

Fill in the grid so that every row, every column and every outlined region of nine cells contains the digits 1 through 9.

↓

				3				
			1		5			
		7				2		
	2						4	
8				2				7
	7						6	
		6				3		
			5		8			
	9	4				5	3	

→

**Consecutive Sudoku**

**165 points**

Fill in the grid so that every row, every column and every 3x3 box contains the digits 1 through 9. Neighboring cells which contain consecutive digits are separated by white bars. Cells which are not separated by white bars cannot contain consecutive digits.

↓

				1				
5								2
				2				

→

# INDIAN SUDOKU CHAMPIONSHIP 2010

## 1<sup>st</sup> ONLINE ROUND 3<sup>rd</sup> January 2010

### PART 3: Mixed Bag

<b>Part 3 : Mixed Bag (700 points)</b>	
Outside	75
Quadruple	75
Magic Square Sudoku	75
No Knight Step	115
Group Sum	180
Toroidal	180



### Magic Square Sudoku

75 points

Fill in the grid so that every row, every column and every 3x3 box contains the digits 1 through 9. The cells marked in grey form a perfect magic square. In a perfect magic square the sum of digits every row, every column and every diagonal is same.

↓

			6	8	2			
		5				4		
	8						1	
8								4
1								2
3								9
	1						6	
		8				7		
			1	4	7			

↓

### No Knight Step Sudoku

115 points

Fill in the grid with digits from 1 through 8 so that every row, every column and every outlined region contains distinct digits. Some of the outlined regions will wrap between the top and bottom edges, and/or the left and right edges of the grid.

↓

				3		6		
					5			
9		4		2		7		
	4							
7		5				9		2
							1	
		9		7		2		3
			3					
		3		9				

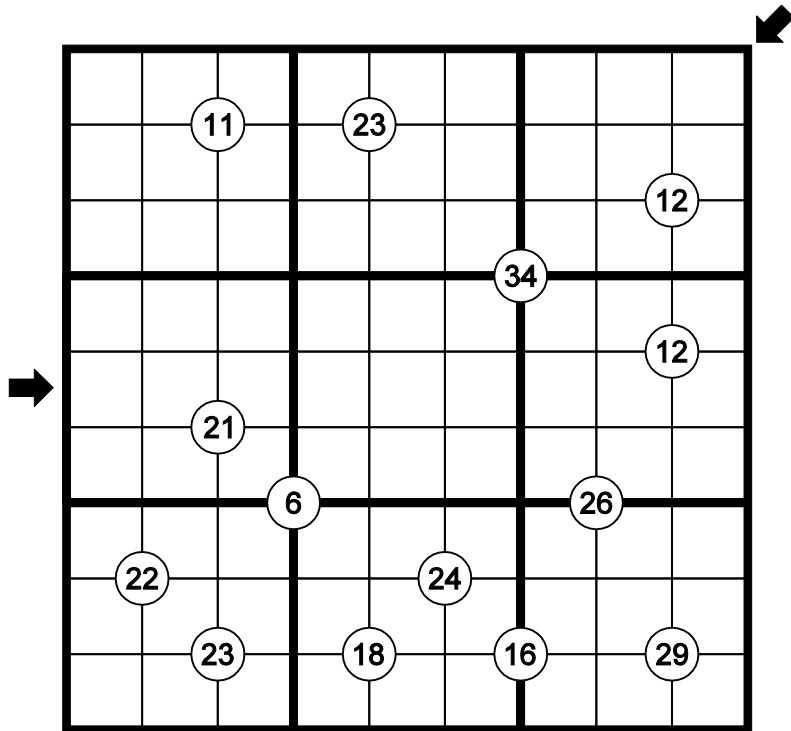
↓



### Group Sum Sudoku

180 points

Fill in the grid so that every row, every column and every 3x3 box contains the digits 1 through 9. The numbers in each circle indicates the sum of the digits in the cells covered by the corresponding circle.



### Toroidal

180 points

Fill in the grid with digits from 1 through 8 so that every row, every column and every outlined region contains distinct digits. Some of the outlined regions will wrap between the top and bottom edges, and/or the left and right edges of the grid.

